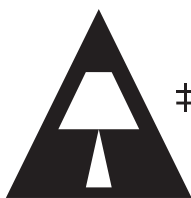
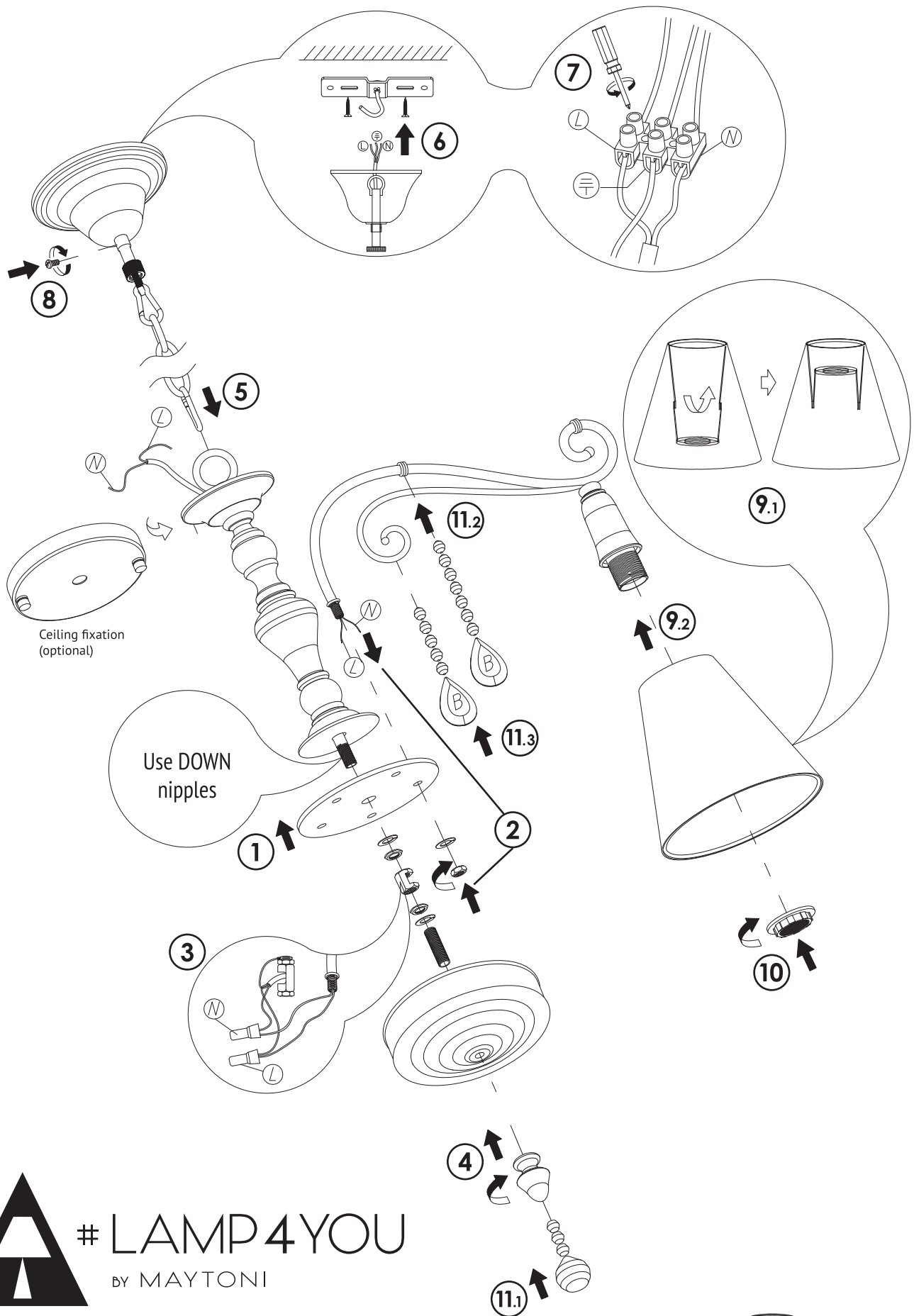
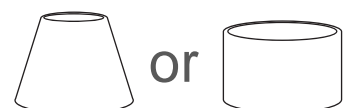


Assembly option 2 (arms down)

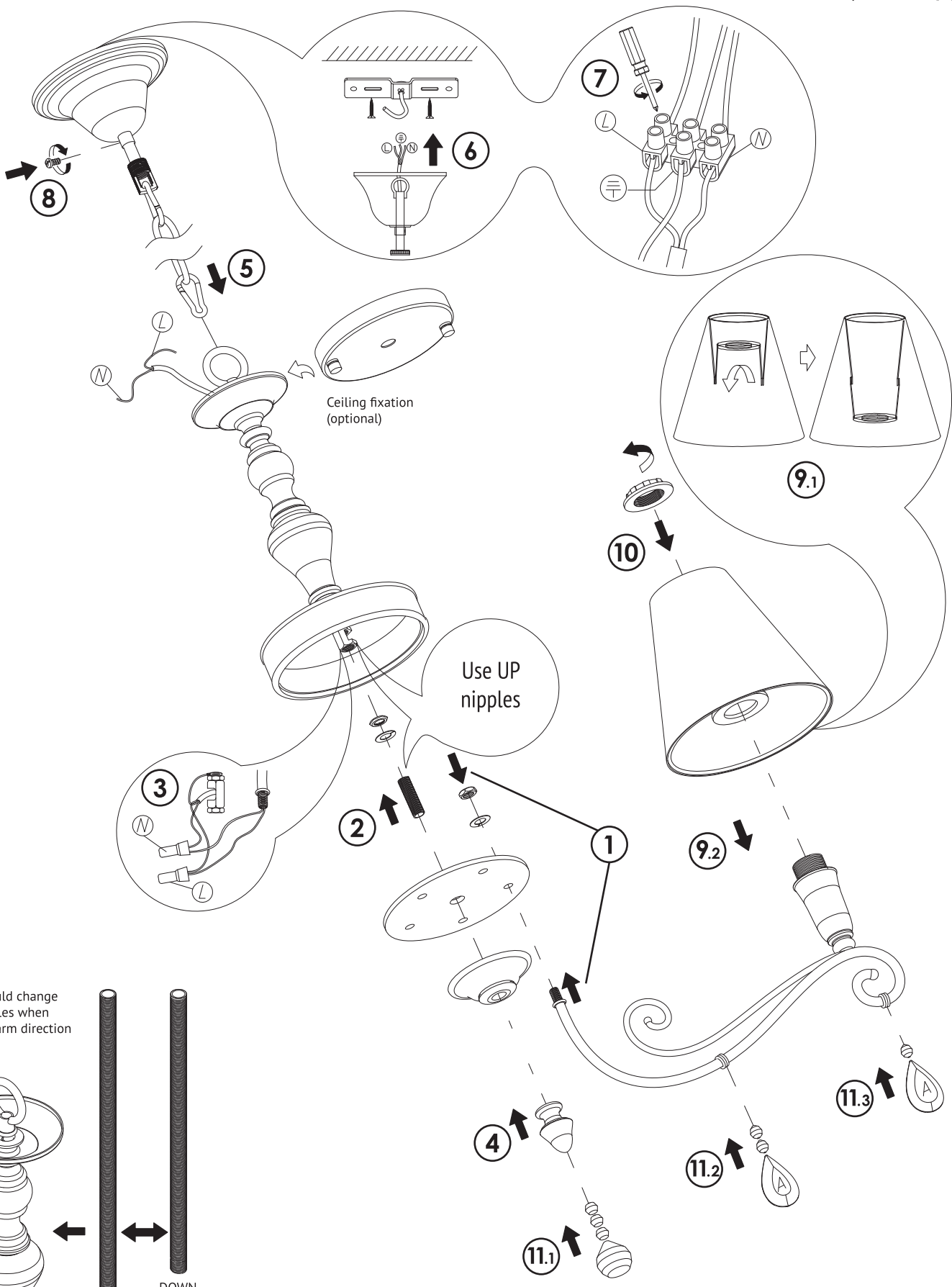


#LAMP4YOU
BY MAYTONI

ATTENTION!
Installation and changing arm direction should be carried out by electrician.
Power should be cut off before cleanliness or bulbs changing



Assembly option 1 (arms up)



Ceiling fixation
(optional)

Use UP
nipples

You should change
the nipples when
change arm direction

