

CLT 0.33 001

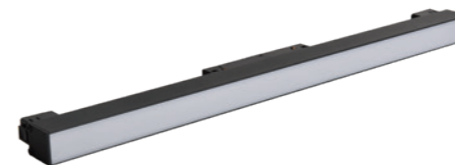
Crystal Lux Technical

CLT

Магнитная трековая система освещения
SPACE 48V

CLT 0.33 001 12W BL M3000K

CODE: 1409/333
L 406 x W 22 x H 44 mm
12W 48V
LED 780Lm
3000K
120°
Ra>90
IP20



CLT 0.33 001 30W BL M3000K

CODE: 1409/335
L 906 x W 22 x H 44 mm
30W 48V LED
1950Lm
3000K
120°
Ra>90
IP20



CLT 0.33 001 12W BL M4000K

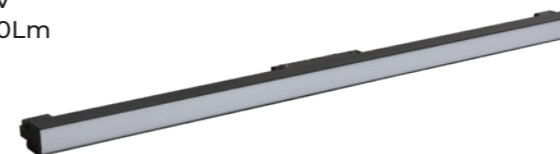
CODE: 1409/300
L 406 x W 22 x H 44 mm
12W 48V
LED 780Lm
4000K
120°
Ra>90
IP20

CLT 0.33 001 30W BL M4000K

CODE: 1409/323
L 906 x W 22 x H 44 mm
30W 48V LED
1950Lm
4000K
120°
Ra>90
IP20

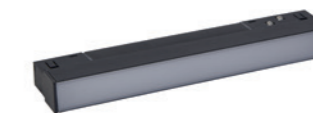
CLT 0.33 001 20W BL M3000K

CODE: 1409/334
L 606 x W 22 x H 44 mm
20W 48V
LED 1300Lm
3000K
120°
Ra>90
IP20



CLT 0.33 001 6W BL M3000K

CODE: 1409/332
L 206 x W 22 x H 44 mm
6W 48V LED
390Lm
3000K
120°
Ra>90
IP20



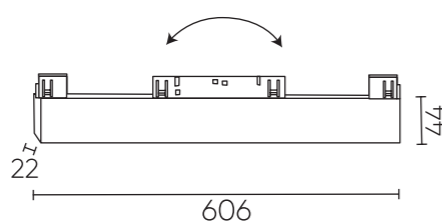
CLT 0.33 001 20W BL M4000K

CODE: 1409/321
L 606 x W 22 x H 44 mm
20W 48V
LED 1300Lm
4000K
120°
Ra>90
IP20

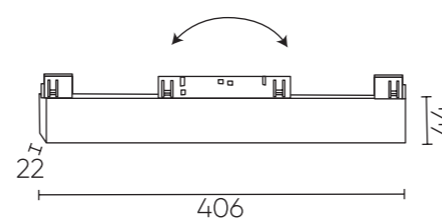
CLT 0.33 001 6W BL M4000K

CODE: 1409/322
L 206 x W 22 x H 44 mm
6W 48V LED
390Lm
4000K
120°
Ra>90
IP20

CLT 0.33 001 20W BL M4000K



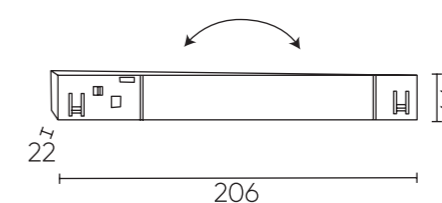
CLT 0.33 001 12W WH M4000K



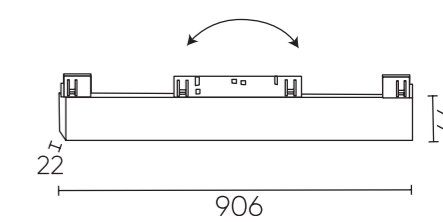
ХАРАКТЕРИСТИКИ

Арматура	алюминий
Рассеиватель	акрил
Покрытие	краска
Цвет	черный, белый

CLT 0.33 001 6W WH M4000K



CLT 0.33 001 30W BL M3000K



Видео инструкция по монтажу магнитной трекингной системы